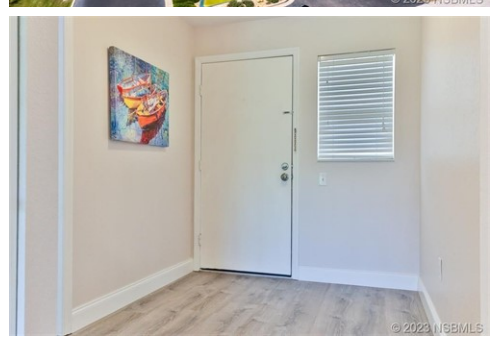




\$ 550,000



2700 N Peninsula Ave Apt 512, New Smyrna Beach, FL 32169

- » Beds: 2 | Baths: 2 Full
- » MLS #: NS1077077
- » Condominium | 1,126 ft² | Lot: 1,903 ft²
- » More Info: [2700NPeninsulaAveApt512.IsForSale.com](https://www.2700NPeninsulaAveApt512.IsForSale.com)



Donna Concannon
 NSB Luxury & Lifestyle Group
 (386) 235-8588 (Donna)
 (386) 453-6017 (David)
 Donna@NSBHOMES.COM
<https://www.nsbhomes.com/staff/donna-concannon>



Riverfront Complex with the Best Sunset Views in town at the Marina at Inlet Marina Villas. Building 5 offers a Tranquil Setting, Winter Sunrise and New Roof in 2023. Completely Renovated in 2023, this Unit boasts 2 BR/2 BA with New Luxury Vinyl Flooring throughout, Impact Windows and Sliders, Kitchen and Both Baths Cabinets, Counters, Sinks, Faucets, new Dishwasher and new Hot Water Heater. And don't miss the Screened Lanai with door to outside, overlooking wetlands and with a Storage Closet for your Bikes & Beach Gear, and an Assigned Covered Parking Space. Inlet Marina Villas features Boat Docks with Slips available by reservation, Heated In-Ground Pool and Riverfront Cabana with Gas Grills, Kitchen, Restroom, Fire Pit and Tennis Courts. Direct gated access through Minorca to beach. Short walk or bike ride to Smyrna Dunes Park, an 184 acre Park along the Southern Shoreline of Ponce Inlet. Over 2 miles of wide, elevated, handicapped-accessible Boardwalk with multiple Scenic Overlooks of the Atlantic Ocean, Indian River and Ponce Inlet. Fishing Pier, Dog-Friendly Swimming Beach, Restrooms and Picnic Pavilions. Be sure to check out our Video Tour of this lovely condo! And, call your LOCAL New Smyrna Beach Realtor today to schedule a showing. ;LocationDescription: Condo .Water: City

